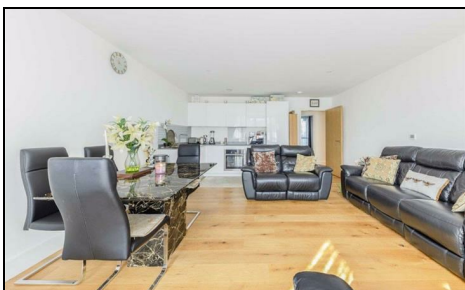


Cavendish Road Colliers Wood, SW19 2FL

£460,000 Leasehold



A beautifully presented two double bedroom, two bathroom first floor apartment located in a highly sought after area close to both Tube Station and amenities. This lovely property has a spacious and bright open plan living/kitchen/dining area with fully integrated appliances and direct access to the private balcony. Accompanied by two double bedrooms and two modern bathrooms, one being en-suite and the added benefit of no onward chain. Properties in this location are rare to the market and we urge you to book viewings early to avoid disappointment.

Lease Remaining: 122 Years. Ground Rent (Per Month): £41.67. Service Charges (Per Month): £269.11.

Cavendish Road, SW19

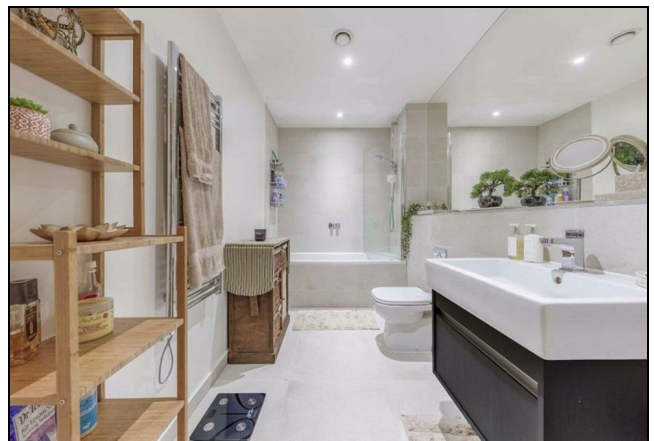
Approximate Gross Internal Area = 67.3 sq m / 724.4 sq ft



First Floor

This floor plan is for representation purposes only and is not drawn to scale.
The Gross Internal Area includes outbuildings shown on the plan.
 Whilst every attempt has been made to ensure the accuracy of the plan measurements of doors, windows and rooms are approximate only and should be checked before making any decisions reliant upon them.
 Copyright Bespokeplans.co.uk (ID829070)

- Two Double Bedrooms
- Two Bathrooms
- No Onward Chain
- Private Balcony
- Transport Links Nearby
- EPC Rating : B
- Merton Council Tax Band D
- Lease Remaining (Years): 122
- Ground Rent (Per Month): £41.67
- Service Charges (Per Month): £269.11.



Energy Efficiency Rating		Current	Potential
Very energy efficient - lower running costs			
(92 plus) A			
(81-91) B		83	83
(69-80) C			
(55-68) D			
(39-54) E			
(21-38) F			
(1-20) G			
Not energy efficient - higher running costs			
England & Wales		EU Directive 2002/91/EC	

For Free Mortgage Quote and Best Mortgage Rates, call an Ellisons Mortgage Advisor on 020 8544 0518



Although these particulars are believed to be correct, their accuracy is not guaranteed and they do not form part of any contract.

Celebrating 30 years of successful Sales and Lettings in Merton

